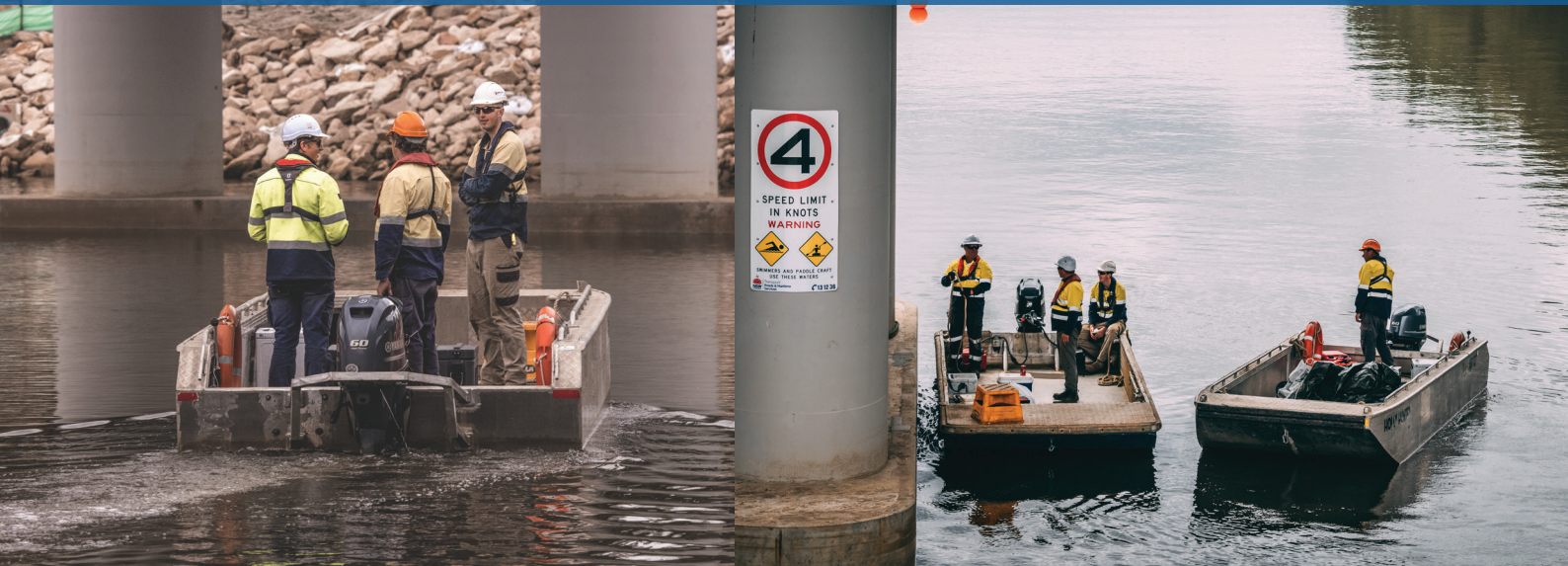


WORK PUNTS



EAST COAST
MARINE CONTRACTING

WORK PUNTS SUPPORT VESSEL



General

Type	Work Punt
Operator	East Coast Marine Contracting
Survey	AMSA 2D
Construction	Aluminium
Road Transport	Yes paired with a boat trailer

Main Dimensions

Length Overall	6.50 meters
Width/Beam	2.40 meters
Depth	0.80 meters
Draft	0.50 meters
Propulsion	Twin 60HP outboards or single 60HP outboard

Features/Accessories

- Clear open deck
- 15 knots cruise speed
- Optional environmental spill containment equipment
- Carrying capacity 800kg
- Surveyed to carry 9 people and 1 crew

Operation:

ECMC own and operate a fleet of road trailerable aluminium work punts. All punts are powered by 60 HP outboards as well as one punt powered by twin 60HP outboards.

ECMC punts are commercially registered and come equipped with all necessary safety equipment. ECMC punts are suitable for a wide range of services including crew transfer, transport of material and cargo, waste removal and skip bins.

EAST COAST MARINE CONTRACTING

PO BOX 547, Caringbah NSW 1495

Phone: 0405 835 762 Email: dane@eastcoastmarinecontracting.com.au